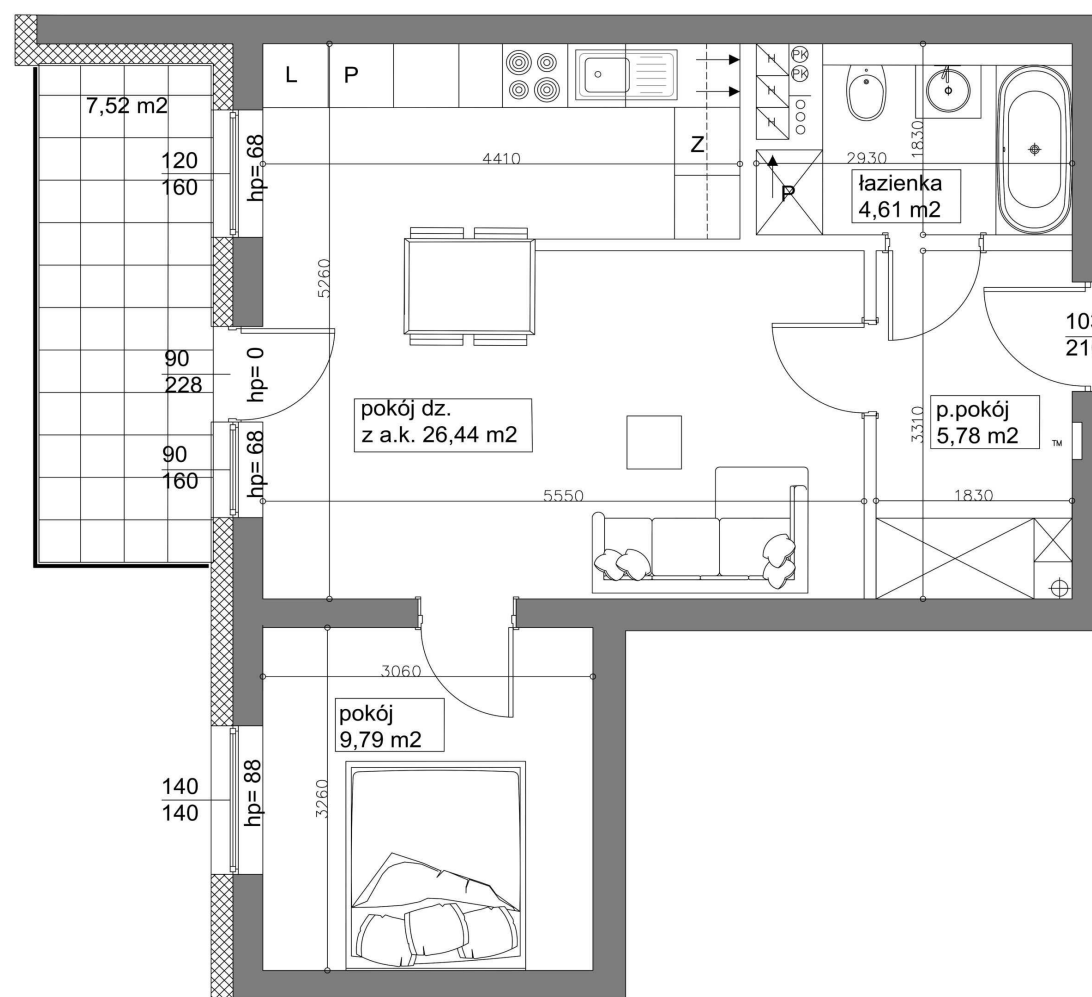




Mieszkanie 36 46.97 m² Piętro V Klatka A

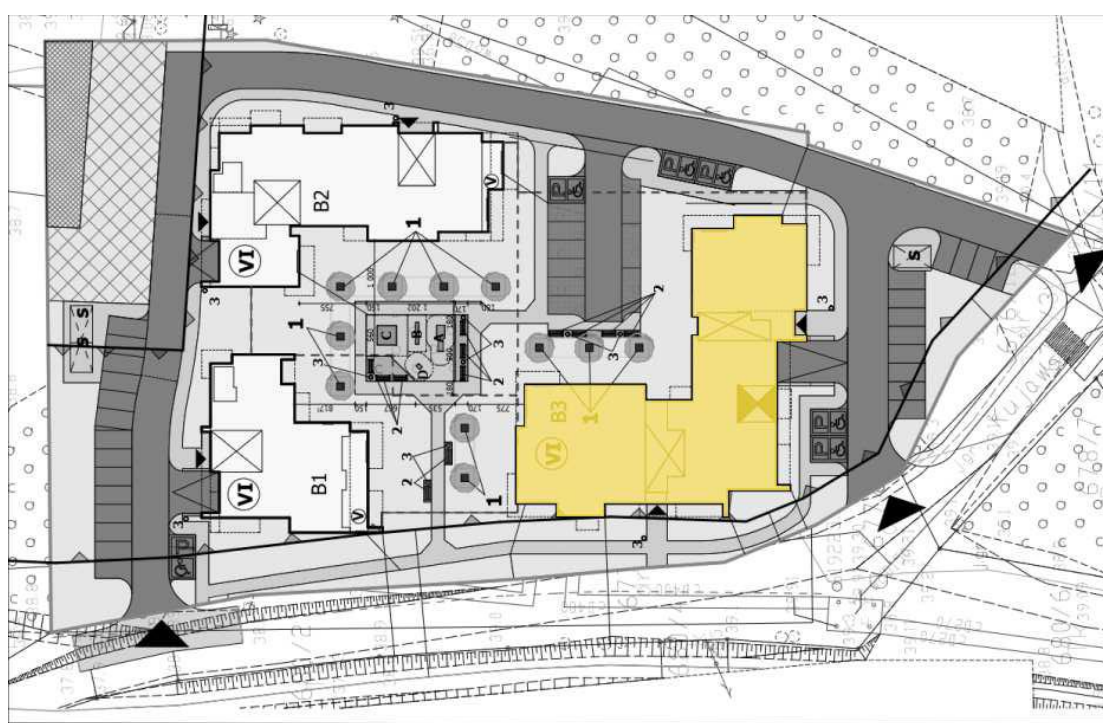


Dane

| | |
|--------------------|----------------------|
| Wymiary mieszkania | 46.97 m ² |
| Wymiary balkonu | 7.77 m ² |
| Ilość pokoi | 2 |

| | |
|---------|-------|
| Kuchnia | Aneks |
| Piętro | V |
| Klatka | A |

Plan Zagospodarowania terenu



Rzut piętra

