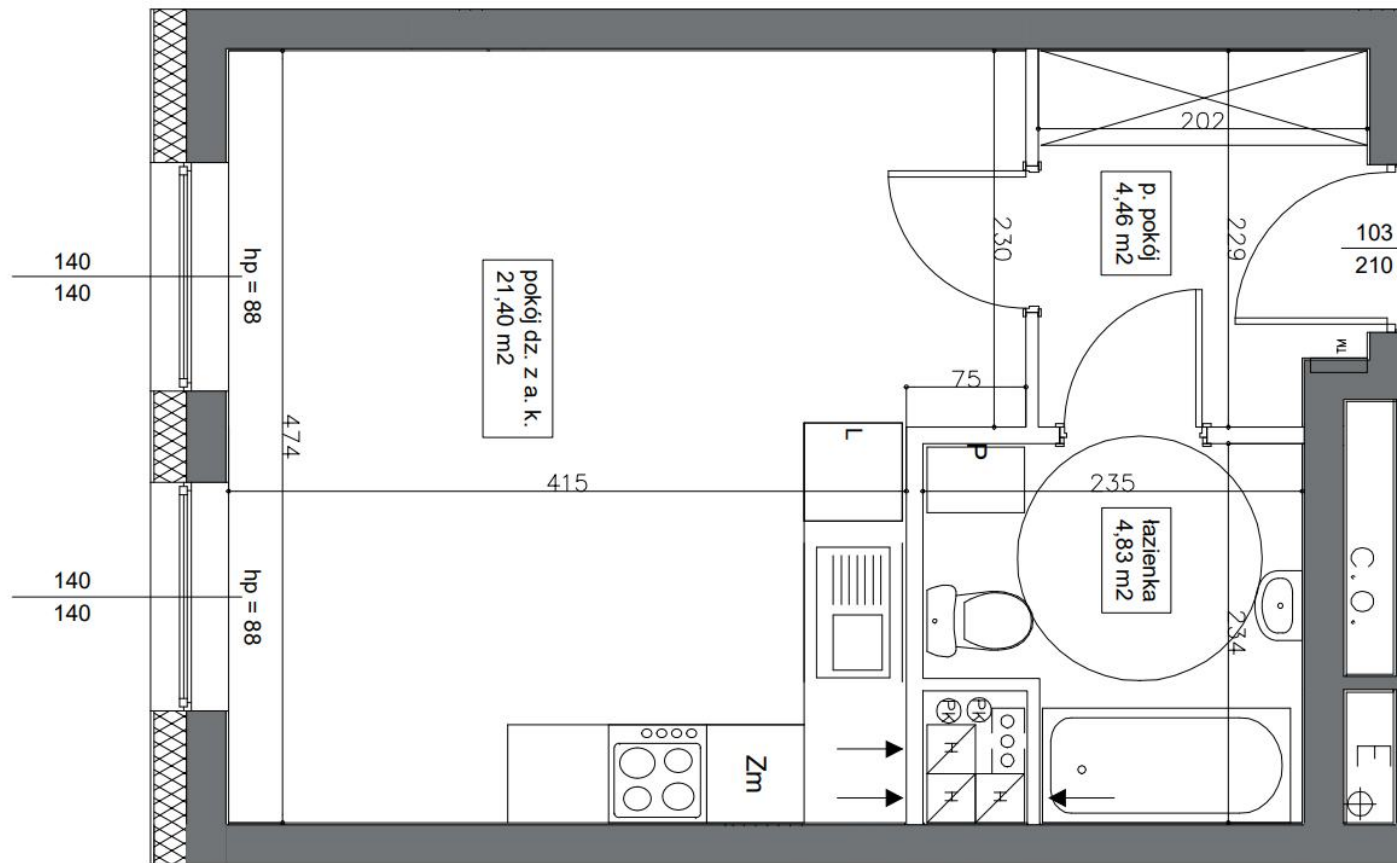




Mieszkanie 45 30.69 m² Parter Klatka B

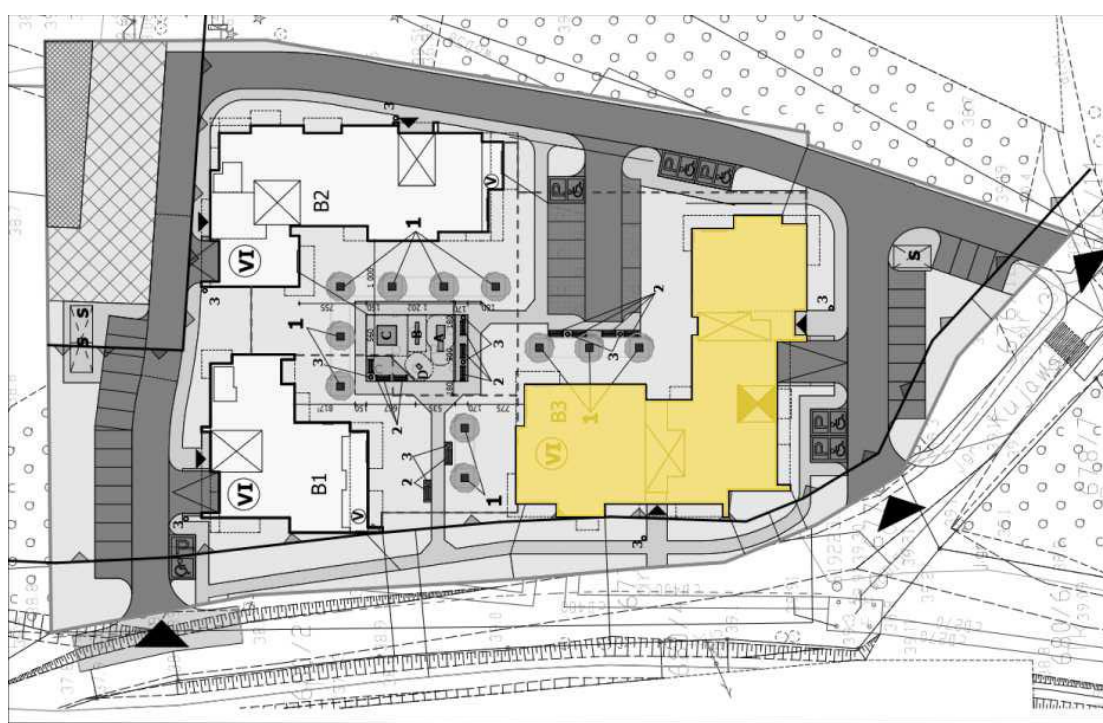


Dane

| | |
|--------------------|----------------------|
| Wymiary mieszkania | 30.69 m ² |
| Wymiary balkonu | 0 m ² |
| Ilość pokoi | 1 |

| | |
|---------|--------|
| Kuchnia | Aneks |
| Piętro | Parter |
| Klatka | B |

Plan Zagospodarowania terenu



Rzut piętra

